

# 2012 PRICE LIST

"SAW GUIDES THAT ARE USER FRIENDLY"



**Orders** 1-800-821-3491  
**Phone** 1-717-484-0230  
**Fax** 1-717-484-0933  
**E-mail** mayaposi@att.net  
**Web** mayaposi-stop.com

## MAYA POSITIONING EQUIPMENT MFG CO. INC.

940 Swamp Church Road • Reinholds, PA 17569 • P.O. Box 207

### SALE INFORMATION

- Ordering:** To order a standard system, specify Part No. and quantity only. To order a non-standard system, please call factory for quotation.
- Delivery:** Standard systems are shipped within 5 days of receipt telephone, fax, mail or E-mail orders. Special orders and custom saw stations require 4 to 6 weeks for delivery.
- Terms:** All prices are factory net. Open accounts are 2% - 10 days, net - 30 days. Others are C/C or prepaid. Down-payment of 20% is required when ordering saw stations.
- Warranty:** Covers all parts, materials and workmanship on Posi-Stop system and Saw Stations (except replacement parts) in the period of five years from the purchase date.

\* FEDERAL EMPLOYER ID. NO. 232556838 \*

## UNIVERSAL GUIDE RAILS

*Shipped by UPS*

Rail Length	2'	4'	6'	8'	10'	12'	14'	16'
Part No.	UGR-02	UGR-04	UGR-06	UGR-08	UGR-10	UGR-12	UGR-14	UGR-16
Price \$	64.00	128.00	192.00	256.00	320.00	384.00	448.00	512.00

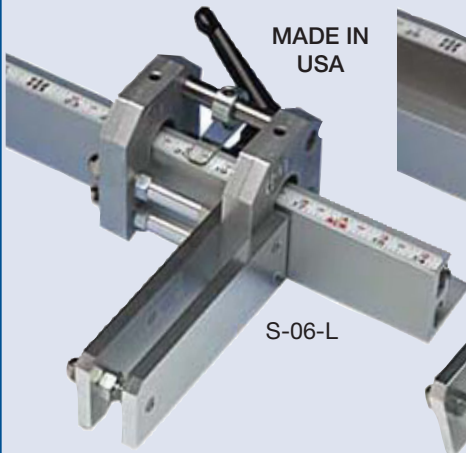
NOTES: Rails longer than 8' are shipped spliced: 8'+4', 8'+6' etc. No extra charge for splicing work. Tapes are included. Rails have precut slotted or countersink mounting holes located on 12" CTR. Material is heavy extruded and anodized aluminum with excellent dimensional tolerances. Height = 2.25", Width = 2.00", Horizontal Flange Thickness = 1/4", Vertical Flange Thickness = 3/4".

## SPECIALTY POSI-STOP UNITS

DESCRIPTION	PART NO.	PRICE \$
Up-Slide Posi-Stop	U-01-D	313.00
Flex Posi-Stop	FLX-01-D	186.00
Flex-Slider (only)	SLD-01-D	79.00

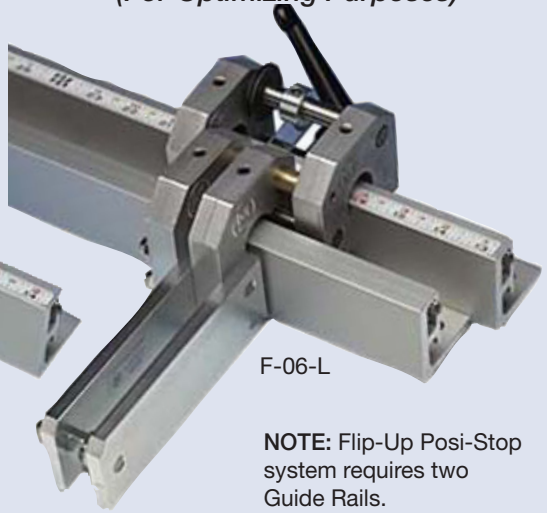
**6" RIGID POSI-STOP**  
(For General Purpose)

**6" FLIP-UP POSI-STOP**  
(For Optimizing Purposes)



MADE IN  
USA

S-06-L



F-06-L

NOTE: Flip-Up Posi-Stop system requires two Guide Rails.

**RIGID POSI-STOP UNITS**

DESCRIPTION	IMPACT PLATE L X H	PART NO.		PRICE \$
		L/H	R/H	
RIGID POSI-STOPS	1" x 2"	S-01-L	S-01-R	275.00
	1" x 2" / 45°	S-45-L	S-45-R	278.00
	2 x 7/8" DIA.	S-01-D (Dual)		303.00
	6" x 2"	S-06-L	S-06-R	324.00
	12" x 2"	S-12-L	S-12-R	368.00
RIGID DOUBLE LOCK POSI-STOPS (Special Orders)	1" x 2"	D-01-L	D-01-R	391.00
	6" x 2"	D-06-L	D-06-R	496.00
	12" x 2"	D-12-L	D-12-R	650.00

**FLIP-UP POSI-STOP UNITS**

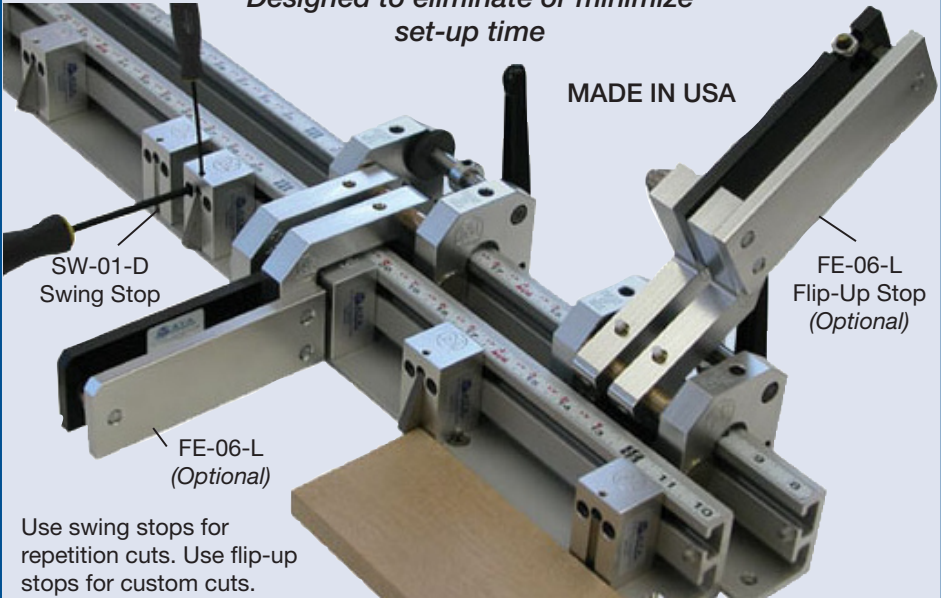
FLIP-UP POSI-STOPS	1" x 2"	F-01-L	F-01-R	374.00
	6" x 2"	F-06-L	F-06-R	429.00
	12" x 2"	F-12-L	F-12-R	469.00
FLIP-UP DOUBLE LOCK POSI-STOPS (Special Orders)	1" x 2"	FD-01-L	FD-01-R	581.00
	6" x 2"	FD-06-L	FD-06-R	677.00
	12" x 2"	FD-12-L	FD-12-R	850.00

NOTE: Select L/H side stops for use on L/H side of the saw, R/H-opposite side. Customized impact plates are available.

# UNIVERSAL POSI-STOP SET-UP

*Designed to eliminate or minimize  
set-up time*

MADE IN USA



SW-01-D  
Swing Stop

FE-06-L  
(Optional)

FE-06-L  
Flip-Up Stop  
(Optional)

Use swing stops for repetition cuts. Use flip-up stops for custom cuts.

**NOTES:** Stops FE-06-L have extended flip-up arms to allow for overpassing the swing stops. Apply same price like for F-06-L. Maximum swing stop protrusion = 1/2". Protrusion is controlled with set screw. Impact plates are spring loaded. Retraction force = .25lb. Impact plates and springs can be pulled-out from the body without removing the stop from the Guide Rail. Swing stops are locked in place with socket head screws and dual hole lock-plates.

## SWING POSI-STOP UNITS

DESCRIPTION		NO. OF IMPACT PLATES	PLATE TO PLATE	BODY LENGTH (INCH)	PART NO.	PRICE \$
SINGLE SWING POSI-STOPS (For General Purpose)	HEAVY DUTY	1	Min. 1 1/4"	1.25	SW-01-D	69.00
	MEDIUM DUTY	1	Min. 1"	1.00	SW-01-D1	79.00
DUAL SWING POSI-STOPS (For Close Locations)		2	1/2"	1.75	SW-2X-500	120.00
		2	5/8"	1.875	SW-2X-625	122.00
		2	3/4"	2.00	SW-2X-750	124.00
		2	7/8"	2.125	SW-2X-875	126.00
GANG SWING POSI-STOPS (For Cabinet & Door Makers)		4	2"	8.00	SW-4X2IN	285.00
		10	32mm	320mm	SW-10x32	465.00

**NOTE:** Swing Stops height H = 2.125", width W = 1.23".  
Material: 6061-T6 anodized aluminum.

## 14' INDUSTRIAL SAW STATION (Stationary/Mobile)

Saw support system is fully X-Y-Z adjustable and designed to fit all miter saws sold in USA.

Build your own Industrial Saw Station: select needed Tables, Rails, Stops and install them on the Maya Saw Station Base\*

**MADE IN USA**



**Special  
2012 Sale  
\$3980.00**

Regular Price \$4,458  
Saw Not Included

Saw Station Base is shipped fully assembled.

\*Tables can be also attached directly to your up-cut, radial-arm or band saw without the Saw Station Base. For stationary application, consider using Saw Support Kit instead of Saw Station Base.

Stations are built as a stationary/mobile or stationary only.

## INDUSTRIAL SAW STATIONS

DESCRIPTION	DIMENSION (INCH)	PART NO.	PRICE \$
SAW STATION BASE (Stationary/Mobile)	98L x 27W x 34H + 2" Adjust.	SB-08	1,980.00
SAW SUPPORT KIT (Stationary Only)	42"L. - 2 rails 24" L. - 2 rails	SF-01	480.00
STAINLESS STEEL TABLE TOPS (H-Stands Not Included)	48 x 18.5 x 2.5	T-04-S/S	490.00
	72 x 18.5 x 2.5	T-06-S/S	680.00
	96 x 18.5 x 2.5	T-08-S/S	830.00
STAINLESS STEEL TABLE TOPS WITH ROLLERS (1/9" DIA x 10" L)	48 x 18.5 x 2.5	R-04-S/S	590.00
	72 x 18.5 x 2.5	R-06-S/S	830.00
	96 x 18.5 x 2.5	R-08-S/S	1,030.00
H-STANDS	25W x 34H x 2" Adj.	HS-34	285.00

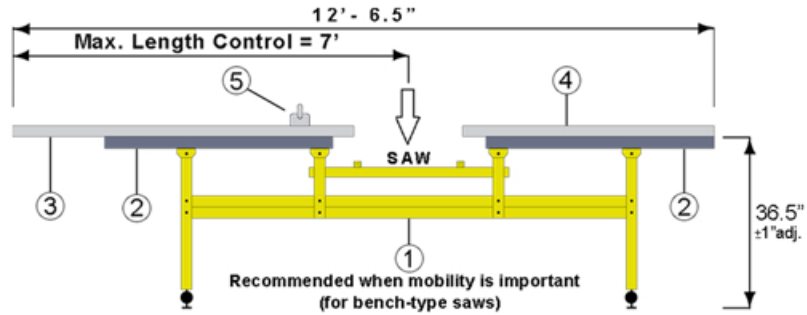
## REPLACEMENT PARTS

DESCRIPTION	NOTES	PART NO.	PRICE \$
Locking Handle with Stud	For Locking Mechanism	M-032	31.00
Thrust Pad (Shoe)		DI-63	5.25
Snap Ring		T-381	1.50
1/2" x 3/4" x 4" Lock Bar		M-035A	22.00
Lexan Hair Line Indicator	For Read-Out	M-027	3.50
Teflon or Brass Tipped Set Screws	For Slide System	M-001	2.50
Self-adhesive tapes	1/2" x 12' (L to R)	EW-144-L	12.50
English, 1/16" Graduation	1/2" x 12' (R to L)	EW-144-R	12.50

# INDUSTRIAL SAW STATION SET-UP EXAMPLES

## EXAMPLE 1 (STATIONARY & MOBILE)

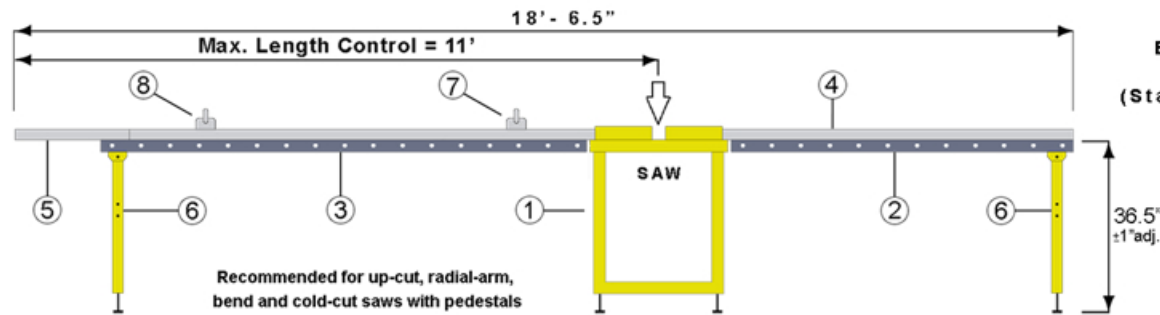
NO.	DESCRIPTION	PART #	QTY
1	8' SAW STATION BASE	SB-08	1
2	4' S/S TABLE TOP	T-04-SS	2
3	6" GUIDE RAIL	UGR-06	2
4	4'4" GUIDE RAIL	UGR-04	1
5	1" FLIP STOP L/H	F-01-L	1



**EXAMPLE 1**  
(Stationary & Mobile)

## EXAMPLE 2 (STATIONARY ONLY)

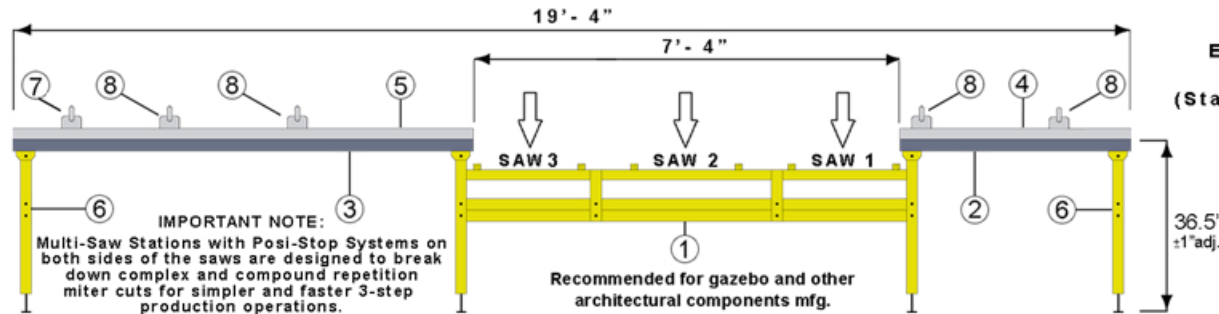
NO.	DESCRIPTION	PART #	QTY
1	ANY SAW W/PEDESTAL	---	1
2	6' SS TABLE TOP W/ROLLERS	R-06-SS	1
3	8' SS TABLE TOP W/ROLLERS	R-08-SS	1
4	6" GUIDE RAIL	UGR-06	1
5	10' GUIDE RAIL (SPLICED 8'+2')	UGR-10	2
6	H-STAND	HS-34	2
7	1" FLIP STOP L/H	F-01-L	1
8	6" FLIP STOP L/H	F-06-L	1



**EXAMPLE 2**  
(Stationary only)

## EXAMPLE 3 (STATIONARY ONLY)

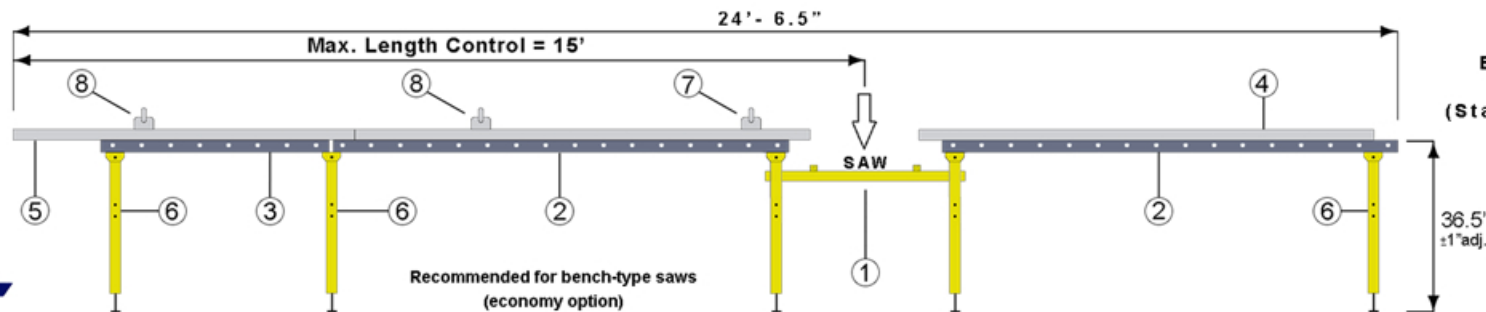
NO.	DESCRIPTION	PART #	QTY
1	MULTI-SAW STATION BASE	MSB-08	1
2	4' S/S TABLE TOP	T-04-SS	1
3	8' S/S TABLE TOP	T-08-SS	1
4	4' GUIDE RAIL	UGR-04	2
5	8' GUIDE RAIL	UGR-08	2
6	H-STAND	HS-34	2
7	1" FLIP STOP L/H	F-01-L	1
8	6" FLIP STOP L/H	F-06-L	4



**EXAMPLE 3**  
(Stationary only)

## EXAMPLE 4 (STATIONARY ONLY)

NO.	DESCRIPTION	PART #	QTY
1	SAW SUPPORT KIT	SF-01	1
2	8' SS TABLE TOP W/ROLLERS	R-08-SS	2
3	4' SS TABLE TOP W/ROLLERS	R-04-SS	1
4	8" GUIDE RAIL	UGR-08	1
5	14' GUIDE RAIL (SPLICED 8'+6')	UGR-14	2
6	H-STAND	HS-34	5
7	1" FLIP STOP L/H	F-01-L	1
8	6" FLIP STOP L/H	F-06-L	2



**EXAMPLE 4**  
(Stationary only)