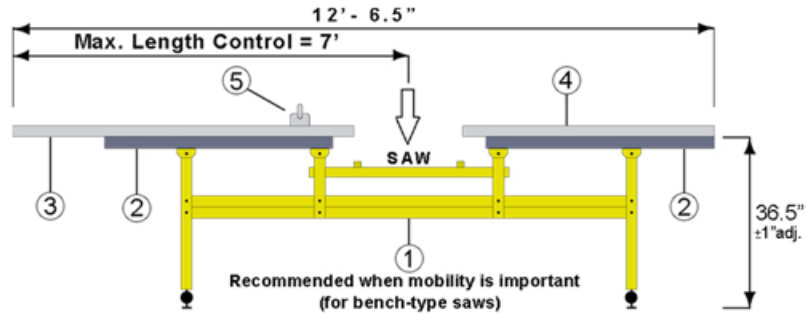


INDUSTRIAL SAW STATION SET-UP EXAMPLES

EXAMPLE 1 (STATIONARY & MOBILE)

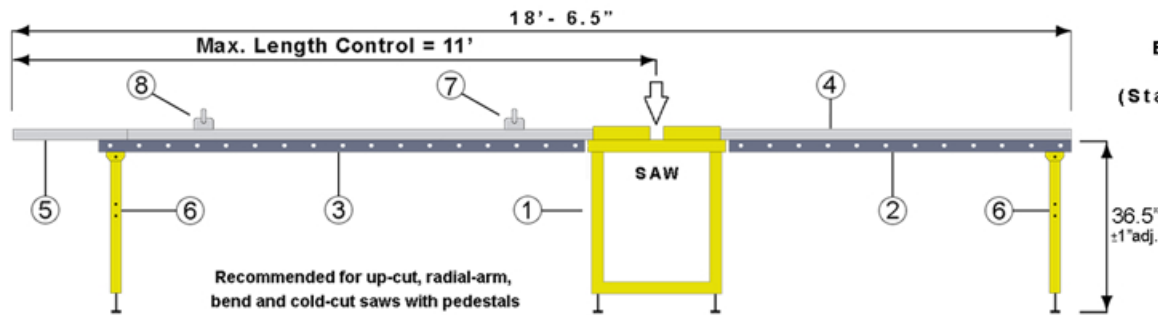
NO.	DESCRIPTION	PART #	QTY
1	8' SAW STATION BASE	SB-08	1
2	4' S/S TABLE TOP	T-04-SS	2
3	6" GUIDE RAIL	UGR-06	2
4	4'4" GUIDE RAIL	UGR-04	1
5	1" FLIP STOP L/H	F-01-L	1



EXAMPLE 1
(Stationary & Mobile)

EXAMPLE 2 (STATIONARY ONLY)

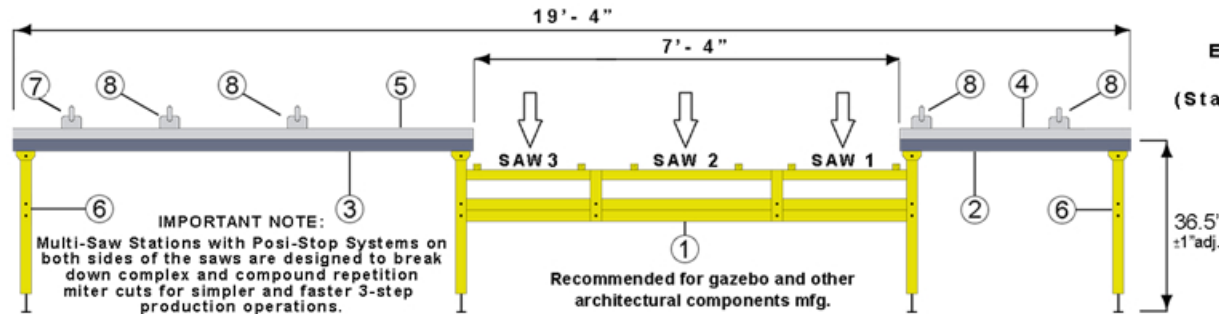
NO.	DESCRIPTION	PART #	QTY
1	ANY SAW W/PEDESTAL	---	1
2	6' SS TABLE TOP W/ROLLERS	R-06-SS	1
3	8' SS TABLE TOP W/ROLLERS	R-08-SS	1
4	6" GUIDE RAIL	UGR-06	1
5	10' GUIDE RAIL (SPLICED 8'+2')	UGR-10	2
6	H-STAND	HS-34	2
7	1" FLIP STOP L/H	F-01-L	1
8	6" FLIP STOP L/H	F-06-L	1



EXAMPLE 2
(Stationary only)

EXAMPLE 3 (STATIONARY ONLY)

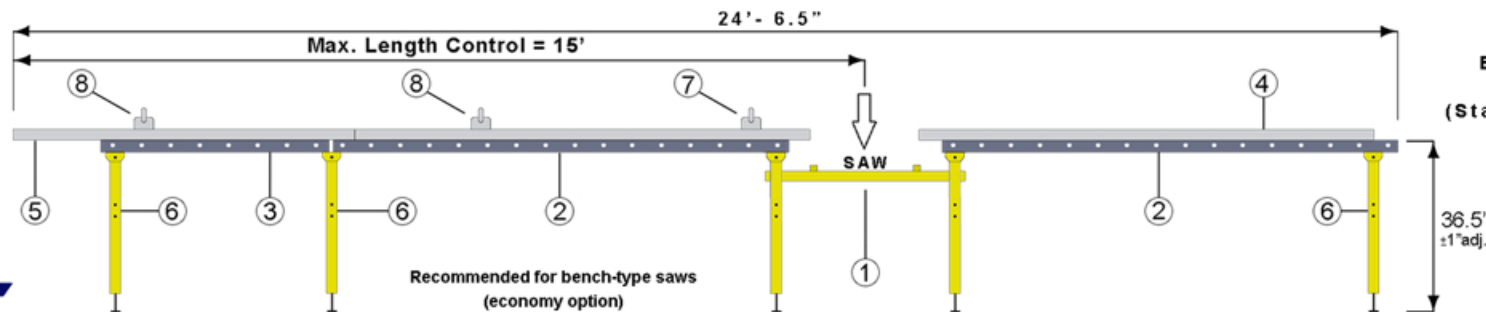
NO.	DESCRIPTION	PART #	QTY
1	MULTI-SAW STATION BASE	MSB-08	1
2	4' S/S TABLE TOP	T-04-SS	1
3	8' S/S TABLE TOP	T-08-SS	1
4	4' GUIDE RAIL	UGR-04	2
5	8' GUIDE RAIL	UGR-08	2
6	H-STAND	HS-34	2
7	1" FLIP STOP L/H	F-01-L	1
8	6" FLIP STOP L/H	F-06-L	4



EXAMPLE 3
(Stationary only)

EXAMPLE 4 (STATIONARY ONLY)

NO.	DESCRIPTION	PART #	QTY
1	SAW SUPPORT KIT	SF-01	1
2	8' SS TABLE TOP W/ROLLERS	R-08-SS	2
3	4' SS TABLE TOP W/ROLLERS	R-04-SS	1
4	8" GUIDE RAIL	UGR-08	1
5	14' GUIDE RAIL (SPLICED 8'+6')	UGR-14	2
6	H-STAND	HS-34	5
7	1" FLIP STOP L/H	F-01-L	1
8	6" FLIP STOP L/H	F-06-L	2



EXAMPLE 4
(Stationary only)